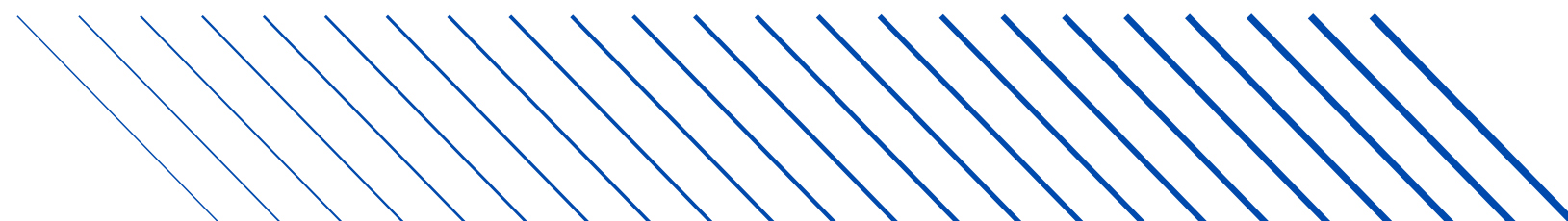
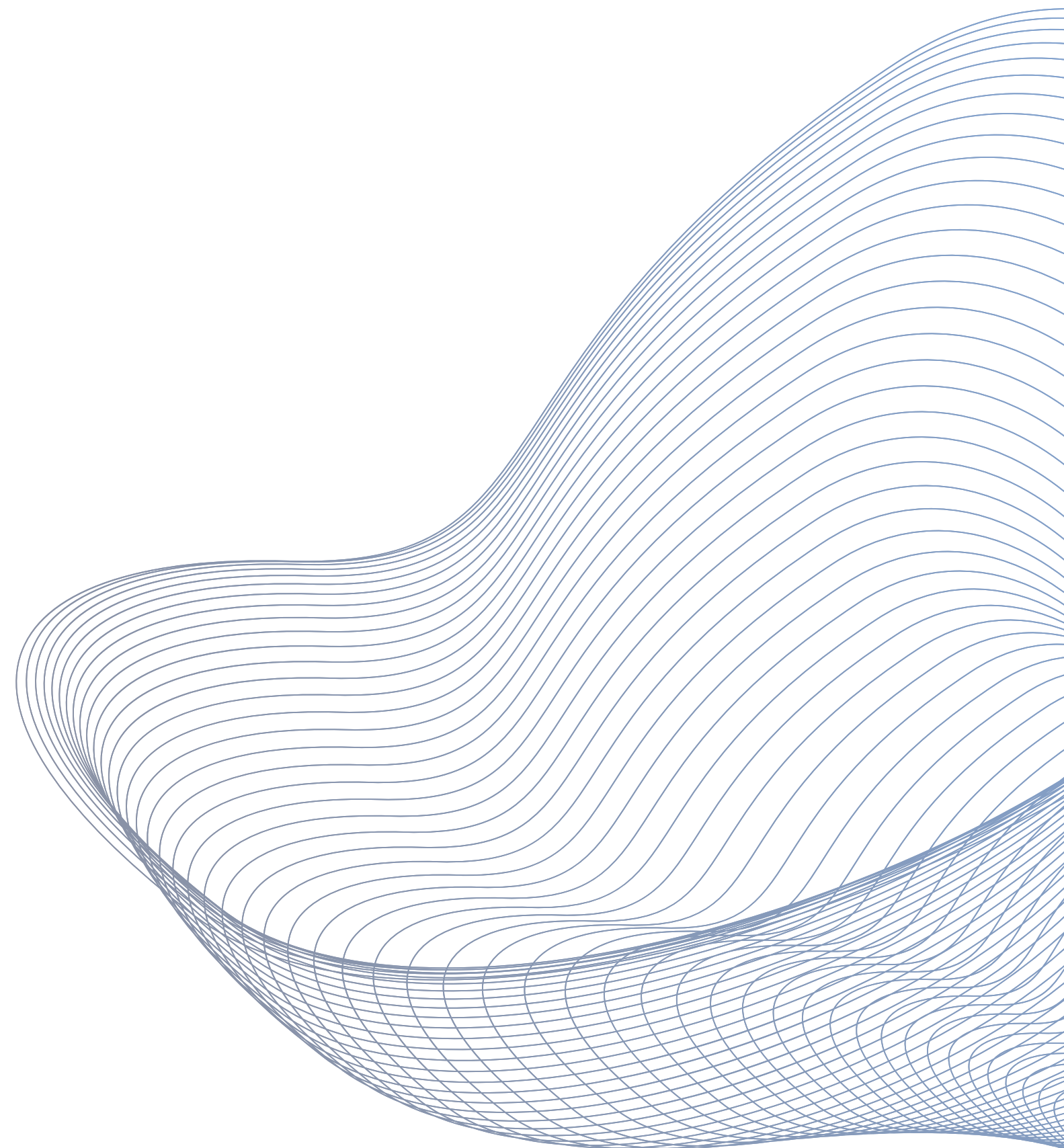




TechBridge
Making the World Smarter

TECHBRIDGE

Quantify the Contribution of **AI**
in Enterprise CyberSecurity





Agenda

- **Introduction to AI in Enterprise CyberSecurity**
- **Benefits of AI in Cybersecurity**
- **Use Cases and Examples**
- **Quantifying the Contribution of AI**
- **Conclusion**

The Synergy of AI and Enterprise CyberSecurity

AI in cybersecurity involves leveraging advanced algorithms and machine learning to fortify defenses, detect threats, and respond to cyber attacks intelligently



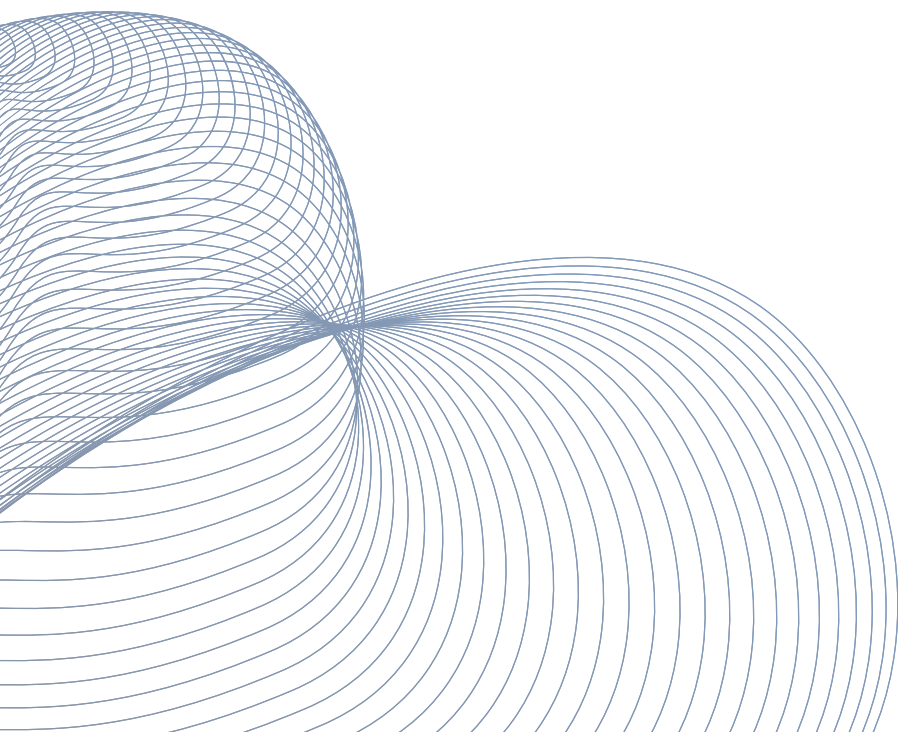
AI in Addressing Modern Cyber Threats:

- Advanced Threat Detection
- Proactive Defence
- Intelligent Edge



AI Enhances Traditional CyberSecurity Measures:

- Improving Threat Detection
- Real-Time Monitoring and Response
- Facilitating Intelligent Risk Assessment
- Automating Routine Tasks



Enhancements Brought by AI to CyberSecurity

A person wearing a dark hoodie is looking at a laptop screen. The image is overlaid with a grid pattern and binary code (0s and 1s) in a light blue color. The background is dark, and the overall aesthetic is technical and futuristic.

- **Automated Threat Detection and Response**
- **Real-time Monitoring and Incident Management**
- **Predictive Analytics and Proactive Defense**
- **Adaptive and Self-learning Capabilities**

Use Case: Enhancing CyberSecurity with AI-Powered Systems

A woman with long hair, wearing a grey blazer, is smiling and pointing at a whiteboard with a marker. Another person is partially visible on the right, looking towards the whiteboard. The background shows a modern office environment with windows and doors.

- **AI-powered Intrusion Detection Systems**
- **Behavior-based Anomaly Detection**
- **AI-driven Threat Intelligence and Analysis**
- **Machine Learning for Malware Detection**
- **AI-enabled User and Entity Behavior Analytics**

Quantifying the Contribution of AI

Quantitative and Qualitative Metrics



- **Cost Savings:** Reduction in security incidents, manual labor, and downtime
- **Enhanced Detection and Response:** Mean time to detect and Mean time to respond
- **Improved Accuracy:** Minimization of false positives and negatives
- **Scalability and Efficiency:** AI's ability to handle vast amounts of data and automate tasks
- **ROI Analysis:** Comparing AI-powered solutions with traditional approaches
- **Customer Testimonials:** Experiences and benefits observed by organizations



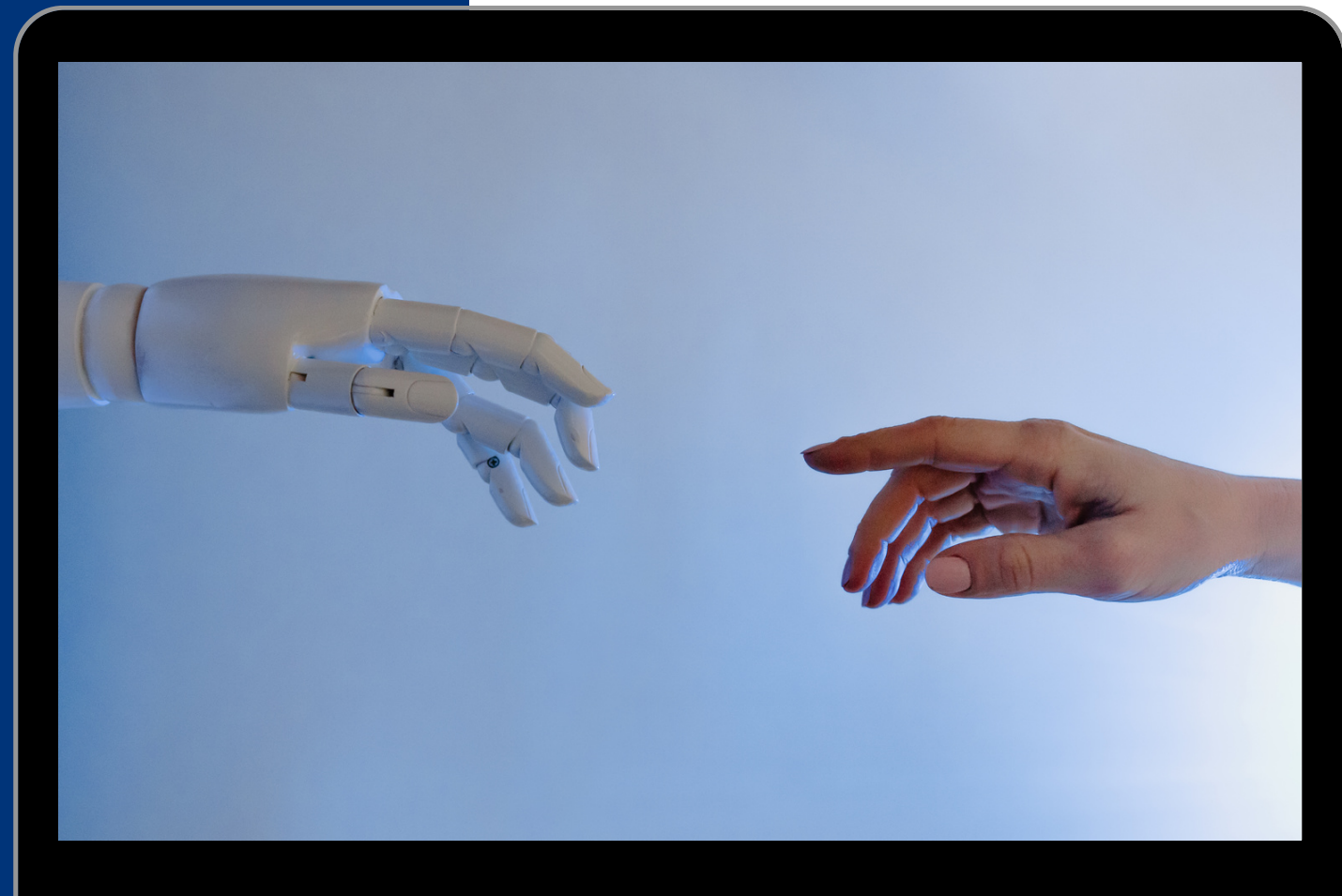
Future of AI : Artificial Intelligence-backed Cyber Defense



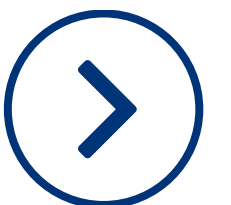
- **Smart Learning:** Spotting threats and improving performance through data analysis
- **Adaptive Security:** Learning from past incidents and adjusting defences to counter new threats
- **Learning from Simulated Attacks:** Enhancing real-world threat detection and response capabilities through simulated attack analysis
- **Transfer learning:** Applying knowledge from one task to another for efficient adaptation to new threats



Numbers: the Contribution of AI



- **61%** of organization believe AI is necessary to combat cyber threats effectively
- According to Accenture AI tool response **10 times** faster response rate
- **Up to 50%** cost saving in detecting and responding to cyber attacks
- According to the **MarketsandMarkets** Global market for AI in cybersecurity will grow from **\$8.8 billion in 2019 to \$38.2 billion by 2026**
- A survey by **Deloitte** found that **63%** of organizations are using AI or machine learning



Conclusion

AI's quantifiable contribution in enterprise CyberSecurity:

- Scalability
- Reducing Risk
- Enhancing Defense
- Improved Accuracy
- Real-Time Monitoring
- Enhanced Threat Detection
- Faster Incident Response
- Protecting critical Assets and Data

By harnessing AI in CyberSecurity, Organizations can quantify:

- Cost Savings
- Minimize Downtime
- Strengthen overall Security Posture
- Increase Productivity, Improve Efficiency



Conclusion

Case studies and Statistics Demonstrate the tangible impact of AI in:

- Threat Detection
- Incident Response
- Risk mitigation

AI's continuous learning and adaptation capabilities ensure organizations stay ahead of:

- Evolving Cyber Threats
- Quantifying its value in future-proofing CyberSecurity



Our Portfolio

- Enterprise Monitoring System
- Cyber Security
- Productivity
(Unified Communication & Collaboration)



Thank You Get in Touch



“We thrive to make Technology to look Simple & Accessible”



Spaze iTech Park, 326, 3rd floor B3 Tower, Sector 49,
Gurugram, Haryana 122018

Phone: 9289440084

Website: <https://tech-bridge.biz/>

Email: marketing@tech-bridge.biz